

The best way to explore **Hawaii**



**Porthole
READERS'
CHOICE
AWARDS
2015**

Best Hawaii Itinerary
10 years in a row
Porthole Cruise Magazine

Cruise 4 islands in 7 days
2016 - 2018
Pride of America

DISCOVER HAWAII

WITH NORWEGIAN CRUISE LINE



Sea turtle, Hawaii

HAWAIIAN ISLANDS ESSENTIALS

Hawaii is a paradise on earth. Perfect weather year round, home to one of the world's most active volcanoes, sugar beaches, colourful coral reefs, the birthplace of modern surfing and the Hula - Hawaii has it all!

Cruising is the perfect way to uncover the best of each island. Discover 4 islands in 7 days on board the multi-million dollar upgraded Pride of America. Enjoy overnight stays in Maui and Kauai.

Plus, with more than 100 hours on shore, you have plenty of time to hike up a waterfall, take an optional helicopter ride over an active volcano and brush up on your Hula at an authentic luau.



Waikiki, Honolulu

OAHU

Catch a wave on Waikiki Beach or experience royal history on a tour of Iolani Palace.



Rainbow Falls, Hilo

BIG ISLAND

On the Big Island you can hike Kilauea, one of the world's most active volcanoes or visit historic Kona.



Kaanapali, Maui

MAUI

Take a drive on the legendary Hana Highway or hike Pipiwai trail.



Napali Coastline, Kauai

KAUAI

Admire the stunning Napali Coast, and desert-like Waimea Canyon.



Mandara Spa

DISCOVER THE UPGRADED PRIDE OF AMERICA

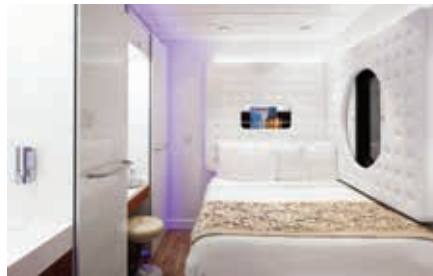
- Flexible dining with 16 options including 7 specialty restaurants[^]
- 11 bars and lounges
- Every stateroom has been upgraded with new bedding, furniture and flat screen TV
- Fully equipped Fitness Centre
- Re-designed pool deck to create an upscale feel on board, features a refinished pool, new loungers and Jacuzzis
- Relaxation takes centre stage at The Mandara Spa, which has been expanded and revitalised to feature more treatment rooms and facials in a tranquil atmosphere

[^]Specialty Restaurants attract a surcharge and an 18% gratuity will be added at check-out time for specialty dining.



INSIDE STATEROOMS (12 sqm)

The most affordable accommodation choice. If you are an active traveller or plan on not spending much time in your stateroom this is the most suitable accommodations for you.



AWARD-WINNING STUDIOS (10 sqm)

For the first time, Norwegian Cruise Line offers staterooms specifically designed and priced for the solo traveller. Created with the guest comfort in mind, these staterooms have direct access to the Studio Lounge - where you can mingle with other solo travellers.

Note: Prices available on request.



OCEANVIEW STATEROOMS (13 sqm)

Oceanview staterooms are configured with two lower beds that can be converted to a queen-size bed. They are ideal for the travellers that want a view!



BALCONY STATEROOMS (from 17 sqm to 22 sqm)

Balcony staterooms are the perfect choice for those that want to watch the marvellous islands of Hawaii from their own private balcony.



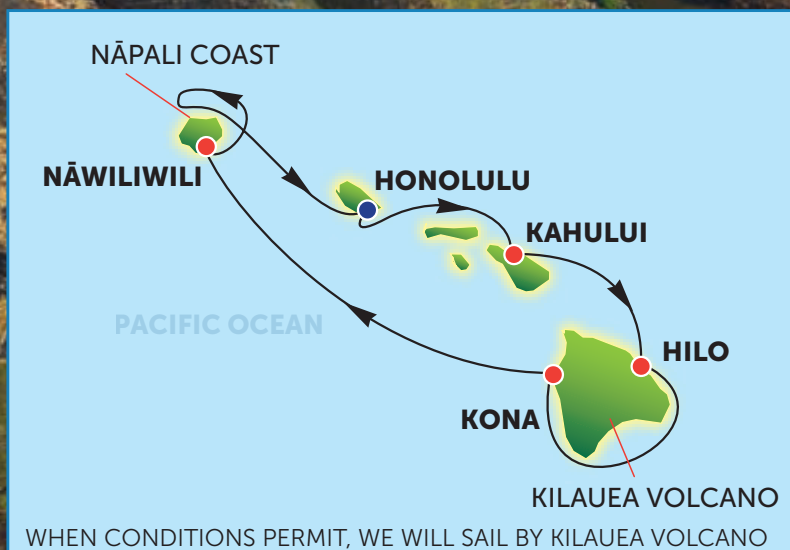
SUITES (from 31 sqm to 128 sqm)

Bring the whole family and choose a Family Suite or enjoy cocktails with your friends in a Penthouse Suite. Suites include all the extras such as butler service and concierge, spacious private balcony, and a living room with convertible sofa bed.

Note: Prices available on request.

10 NIGHT HAWAIIAN HOLIDAY AWAITS

Weekly departures available from 26 November 2016



HOLIDAY INCLUSIONS

- 2 night stay at the hotel of your choice* including breakfast
- 7 night cruise, roundtrip from Honolulu, aboard Pride of America
- All main meals on board your cruise (excl. specialty restaurants)
- 1 night stay at the hotel of your choice* including breakfast
- Seat-in-coach transfers between airport, hotel and port
- Port charges, government fees, hotel resort fee and gratuities on board

*Choose between The Aqua Oasis Hotel (3★) or the Hilton Waikiki Beach Hotel (4★) - for more information, see page 6.

Napali Coastline, Kauai



Honolulu



Hawaii Tropical Hammock



Hilo

Day	Destination	Arrive	Depart
Thursday	HONOLULU, OAHU Arrive in Honolulu via your individual flight arrangement. On arrival, transfer to your chosen accommodation for a two night stay.		
Friday	HONOLULU, OAHU Enjoy a day at leisure.		
Saturday	HONOLULU, OAHU Morning at leisure. Transfer from your hotel to embark 'Pride of America'.		7:00 pm
Sunday	KAHULUI, MAUI Spend two entire days in Maui. There are plenty of activities in Maui. Why not grab a snorkel and explore crescent-shaped Molokini Islet and its more than 250 specimens of tropical fish?	8:00 am	Overnight
Monday	KAHULUI, MAUI		6:00 pm
Tuesday	HILO, BIG ISLAND Explore the lush rainforests and magnificent waterfalls in Hilo. What about booking an optional helicopter tour and watch the lava from Kilauea, flowing into the sea?	8:00 am	6:00 pm
Wednesday	KONA, BIG ISLAND Located in the Western sun-drenched coast of the Big Island, in Kona you can enjoy the day discovering stunning Kealahou Bay.	7:00 am	5:30 pm
Thursday	NAWILIWILI, KAUAI	10:00 am	Overnight
Friday	NAWILIWILI, KAUAI Afternoon cruise of the Napali Coast. This afternoon you can admire the stunning Napali Coast and its soaring cliffs, as we bid farewell to Kauai.		2:00 pm
Saturday	HONOLULU, OAHU Disembark in Honolulu and transfer to your chosen accommodation for an overnight stay.	7:00 am	
Sunday	HONOLULU, OAHU At the scheduled time, transfer from your hotel to the airport for your flight home.		

Note: Flights and excursions are not included in the package.



Hawaiian dancers



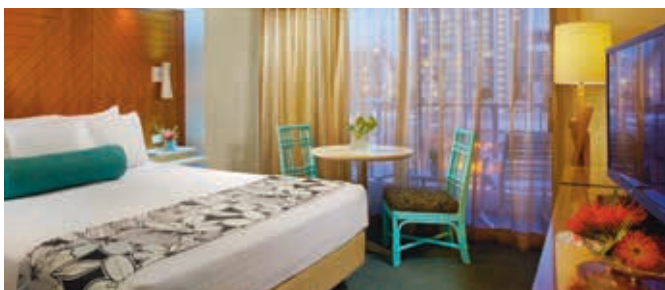
Hawaiian Surfboards



Big Island



PRE & POST CRUISE ACCOMMODATION



AQUA OASIS HOTEL, HONOLULU

Located on lively Lewers Street in the midst of Waikiki's shopping district and just 5 minutes walk to Waikiki Beach, Aqua Oasis Hotel offers convenient amenities and services in a prime location.

The Aqua Oasis features a Japanese restaurant, a Karaoke Studio, outdoor swimming pool, sauna, and offer guests a complimentary shuttle service from Waikiki to Ala Moana.

Stay in a **Hotel Room**, which is unique and colourful. Rooms are air-conditioned, feature private balconies, ensuite bathroom with over-sized deep soaking tub, 42-inch flat-screen TVs, iPod docking station, hand-held shower head, hair-dryer, as well as mini-fridges and coffee makers.

Your package includes Wi-Fi access and daily continental breakfast.



HILTON WAIKIKI BEACH HOTEL, HONOLULU

Hilton Waikiki Beach Hotel is situated one block from stunning Waikiki Beach, and at walking distance from the shopping centres, restaurants, bars and main attractions. Offering the true comfort visitors expect on a Hawaiian getaway.

Hilton Waikiki Beach Hotel features fitness facilities, sundeck, pool bar and heated outdoor pool.

Stay in a **Deluxe City View Room** - elegant and contemporary, decorated with exotic woods and vibrant island colours. Each room comes with an Italian marble bathroom with soaking tub, and private balcony. Rooms also feature coffee making facilities, 42-inch flat-screen TV, and MP3 player.

Enjoy daily American Breakfast during your stay, included in your package.



Prices are per person, twin-share						
Sailing Date	Interior Stateroom		Ocean View Stateroom		Balcony Stateroom	
2016	3★ Aqua Oasis Hotel	4★ Hilton Waikiki Beach Hotel	3★ Aqua Oasis Hotel	4★ Hilton Waikiki Beach Hotel	3★ Aqua Oasis Hotel	4★ Hilton Waikiki Beach Hotel
26 Nov	\$2,950	\$3,175	\$3,255	\$3,480	\$3,855	\$4,080
3 Dec	\$3,055	\$3,240	\$3,260	\$3,445	\$3,840	\$4,025
10 Dec	\$3,025	\$3,175	\$3,230	\$3,380	\$3,795	\$3,945
17 Dec	\$3,070	\$3,305	\$3,470	\$3,705	\$3,980	\$4,215
24 Dec*	\$3,660	On Request	\$4,055	On Request	\$4,695	On Request
31 Dec*	\$3,795	On Request	\$4,165	On Request	\$4,970	On Request
2017	3★ Aqua Oasis Hotel	4★ Hilton Waikiki Beach Hotel	3★ Aqua Oasis Hotel	4★ Hilton Waikiki Beach Hotel	3★ Aqua Oasis Hotel	4★ Hilton Waikiki Beach Hotel
7 & 14 Jan	\$3,090	\$3,135	\$3,485	\$3,530	\$4,085	\$4,130
21 & 28 Jan	\$3,085	\$3,130	\$3,440	\$3,485	\$4,085	\$4,130
4 Feb	\$3,495	\$3,590	\$3,795	\$3,890	\$4,465	\$4,560
11 & 18 Feb	\$3,535	\$3,720	\$3,820	\$4,005	\$4,495	\$4,680
25 Feb	\$3,295	\$3,480	\$3,670	\$3,855	\$4,325	\$4,510
4 Mar	\$3,445	\$3,630	\$3,685	\$3,870	\$4,495	\$4,680
11 Mar	\$3,495	\$3,705	\$3,760	\$3,970	\$4,595	\$4,805
18 Mar	\$3,235	\$3,490	\$3,480	\$3,735	\$4,155	\$4,410
25 Mar	\$2,985	\$3,205	\$3,340	\$3,560	\$3,995	\$4,215
1 Apr	\$3,195	\$3,415	\$3,595	\$3,835	\$4,295	\$4,515
8 Apr	\$3,265	\$3,415	\$3,595	\$3,765	\$4,295	\$4,445
15 & 22 Apr	\$2,955	\$3,105	\$3,355	\$3,505	\$3,955	\$4,105
29 Apr	\$3,265	\$3,415	\$3,480	\$3,630	\$4,140	\$4,290
6 May	\$3,290	\$3,440	\$3,720	\$3,870	\$4,290	\$4,440
13 May	\$3,180	\$3,330	\$3,470	\$3,620	\$4,130	\$4,280
20 May	\$3,395	\$3,545	\$3,620	\$3,770	\$4,295	\$4,445
27 May	\$3,275	\$3,425	\$3,720	\$3,870	\$4,290	\$4,440
3 Jun	\$3,395	\$3,545	\$3,785	\$3,935	\$4,360	\$4,510
10 Jun	\$3,470	\$3,670	\$3,925	\$4,125	\$4,495	\$4,695
17 Jun	\$3,540	\$3,840	\$3,925	\$4,225	\$4,495	\$4,795
24 Jun	\$3,330	\$3,610	\$3,945	\$4,225	\$4,325	\$4,605
1 Jul	\$3,495	\$3,735	\$4,050	\$4,290	\$4,640	\$4,880
8 Jul	\$3,370	\$3,735	\$3,790	\$4,155	\$4,450	\$4,815
15 Jul	\$3,595	\$3,835	\$3,950	\$4,190	\$4,625	\$4,865
22 Jul	\$3,370	\$3,610	\$3,790	\$4,030	\$4,450	\$4,690
29 Jul	\$3,495	\$3,735	\$3,885	\$4,125	\$4,570	\$4,810
5 Aug	\$3,365	\$3,605	\$3,985	\$4,225	\$4,350	\$4,590
12 Aug	\$3,495	\$3,735	\$3,885	\$4,125	\$4,570	\$4,810
19 Aug	\$3,530	\$3,720	\$3,955	\$4,145	\$4,485	\$4,675
26 Aug	\$3,360	\$3,450	\$3,720	\$3,810	\$4,295	\$4,385
2 Sep	\$3,235	\$3,325	\$3,570	\$3,660	\$4,125	\$4,215
9 Sep	\$3,360	\$3,450	\$3,720	\$3,810	\$4,295	\$4,385
16 Sep	\$3,460	\$3,550	\$3,885	\$3,975	\$4,420	\$4,510
23 Sep	\$3,360	\$3,450	\$3,785	\$3,875	\$4,430	\$4,520
30 Sep	\$3,255	\$3,325	\$3,635	\$3,725	\$4,220	\$4,310
7 Oct	\$3,360	\$3,450	\$3,785	\$3,875	\$4,430	\$4,520
14 Oct	\$3,460	\$3,550	\$3,885	\$3,975	\$4,420	\$4,510
21 Oct	\$3,240	\$3,330	\$3,675	\$3,765	\$4,220	\$4,310
28 Oct	\$3,360	\$3,450	\$3,885	\$3,975	\$4,430	\$4,520
4 Nov	\$3,235	\$3,325	\$3,675	\$3,765	\$4,220	\$4,310
11 Nov	\$3,395	\$3,485	\$3,570	\$3,660	\$4,145	\$4,235
18 Nov	\$3,295	\$3,385	\$3,470	\$3,560	\$4,090	\$4,180
25 Nov	\$3,255	\$3,345	\$3,365	\$3,455	\$3,895	\$3,985
2 Dec	\$3,155	\$3,245	\$3,365	\$3,455	\$3,895	\$3,985
9 Dec	\$3,045	\$3,135	\$3,140	\$3,230	\$3,725	\$3,815
16 Dec	\$3,430	\$3,570	\$3,795	\$3,935	\$4,430	\$4,570
23 Dec*	\$3,895	On Request	\$4,250	On Request	\$4,895	On Request
30 Dec*	\$4,055	On Request	\$4,395	On Request	\$5,060	On Request
2018	3★ Aqua Oasis Hotel	4★ Hilton Waikiki Beach Hotel	3★ Aqua Oasis Hotel	4★ Hilton Waikiki Beach Hotel	3★ Aqua Oasis Hotel	4★ Hilton Waikiki Beach Hotel
6 Jan	\$3,375	\$3,430	\$3,770	\$3,825	\$4,455	\$4,510
13 Jan	\$3,250	\$3,305	\$3,625	\$3,680	\$4,250	\$4,305

*Peak Season - a different schedule of payments and cancellation applies

BOOKING TERMS & CONDITIONS

WHAT'S INCLUDED IN YOUR HOLIDAY PRICE (PER PERSON)

- Cruise per itinerary aboard Pride of America
- Port charges, prepaid gratuities and government fees for your cruise
- Accommodation as detailed in your itinerary, including daily breakfast
- Transfers as detailed in your itinerary

Costs are per adult in AUD and are based on twin-share accommodation. Pricing is based on lead in available categories. Oceanview cabins may have obstructed views. Prices are subject to change due to fluctuation in charges, taxes and currency.

Prices are subject to change with or without notice, whether or not the final balance of your holiday has been paid. Cruise is subject to availability at time of booking. Airfares and accommodation are available through Cruiseco and are at an additional cost, subject to availability/change at any time with or without notice.

RESERVATIONS AND PAYMENTS:

Once you have decided on your holiday, simply ask your Cruiseco Travel Agent to book it with us. On confirmation of your booking, a written confirmation will be sent to your Cruiseco Travel Agent. An option will be given for 3-7 days and before the option expires it will be necessary for you to pay a deposit. A minimum deposit of \$1,000 per person will apply. Your Cruiseco Travel Agent will advise you at the time of booking, should any additional deposit amount be required and when they are due. This deposit secures your cruise berth and hotel room (if applicable). Final payment is due 100 days prior to departure from Australia. If your booking is made within 100 days of departure from Australia, full payment will be due immediately. Failure to pay the deposit by the option due date may result in the cancellation of your booking.

Any special meal requirements will be made on a "request" basis only and cannot be guaranteed. Please advise your Cruiseco Travel Agent of your requirements at time of booking.

WHAT'S NOT INCLUDED IN THE PRICE:

Passport and visa fees, insurances of all kinds, laundry, phone calls, beverages (except if specific mentioned in each itinerary), items of a personal nature, optional excursions, resort fee (when applicable) etc. The price does not cover costs and expenses, including the return to your home, if you leave the cruise of your own volition, or due to illness, or as a consequence of official action by the government.

Guests purchasing bar drinks will have the recommended gratuity of 18% automatically added to their final bill. Norwegian Cruise Line ships have an automatic gratuity of 18% for all spa and salon services. These details are subject to change by the cruise line.

ITINERARY CHANGES:

Norwegian Cruise Line reserves the right to amend the cruise itinerary at any time up to and during the voyage.

TRAVEL DOCUMENTATION:

Travel documents will be sent to you approximately 14 days prior to departure from Australia (providing full payment has been received). If you are departing Australia earlier, please ask your Cruiseco Travel Agent to request your travel documents in good time.

TRAVEL INSURANCE:

We recommend that you obtain comprehensive international travel and medical insurance before paying a deposit. Failure to obtain travel insurance will not waive any cancellation fees in the event that you need to cancel your trip.

BOOKING CHANGES, CANCELLATIONS & REFUNDS:

In the unfortunate event that you should have to cancel your holiday, we must be notified in writing. The day that we receive this notice in writing will be considered the date that your cancellation has been made. Certain cancellation fees apply to your holiday, if cancelled after deposit or final payment has been made. These cancellation fees will be levied by the shipping company and possibly other suppliers, and will be greater the closer to your travel date that you cancel. You should check very carefully with your Cruiseco Travel Agent what these fees are, before you make your booking.

A fee of \$25 per person will be charged for any revision or alteration made to a reservation after the booking is confirmed.

CANCELLATIONS AND CANCELLATION FEES:

Notice of cancellation must be made in writing to your Cruiseco Travel Agent. The following scale of charges (includes GST) will apply when notice of cancellation is given prior to holiday departure.

Number of days prior to departure as % of total price (per person)

Days Prior to Departure Date	Cruise Cancellation Fee
91 days or more	\$500 per person
90-76 days	25%
75-61 days	50%
60-31 days	75%
30 days or less	100%

Peak season cancellation schedule

Days Prior to Departure Date	Cruise Cancellation Fee
Greater than 120 days	\$500 per person
119-90 days	25% or the deposit whichever is higher
89-56 days	50% or the deposit whichever is higher
55 days or less	100%

These cancellation penalties are in addition to any cancellation fees that may be levied by your Cruiseco Travel Agent.

CRUISECO'S STATEMENT OF BUSINESS PRACTICE:

Your Cruiseco Travel Agent will provide you, on request, with a copy of Cruiseco's "Statement of Business Practice".

OTHER CONDITIONS:

It is your responsibility to ensure you have read all of the Booking Terms and Conditions and to provide valid travel documents. Be sure to ask your Cruiseco Travel Agent for advice concerning passport and visa requirements. Full cruise terms & Conditions can be found on the Norwegian Cruise Line website.

BOOKING ARRANGEMENTS:

Your booking arrangements are to be made by your Cruiseco Travel Agent, and the person making the booking shall be deemed to have accepted the booking conditions.

This brochure and contents are valid from 6 July 2016

These holidays are promoted by Cruiseco/Discovery Travel Centre License No. 2TA001284 ABN 1 200 193 4461.

Bookings for these cruises must be made with a Cruiseco Travel Agent.

For further details contact your local Cruiseco Travel Agent

If this box is empty call 1800 225 656 or visit www.cruising.com.au

